

Winter 2005



About Face

A newsletter for the referrals and friends of Dr. C Randy Landis & North Valley Maxillofacial Surgery

What does an OMS do?

- Provide safe and effective office anesthesia
- Extract impacted and non-restorable teeth
- Replace lost teeth (dental implants)
- Perform corrective jaw (orthognathic) surgery
- Remove complex tumors
- Re-build faces damaged by injury or disease
- Perform facial cosmetic surgery

Study finds high level of safety and patient satisfaction with OMS office anesthesia

The administration of anesthesia delivered by oral and maxillofacial surgeons in an ambulatory care setting is safe and associated with a high degree of patient satisfaction, according to the findings of a recent study published in the *Journal of Oral and Maxillofacial Surgery*.

The study included more than 34,000 patients who received office-based anesthesia during a 12-month period. Of these, 24,000 patients received deep sedation or general anesthesia.

Of these 24,000, only 1.3% (312) experienced complications, and these were only minor side-effects commonly associated with anesthesia, such as nausea and prolonged recovery.

No long-term adverse effects or deaths were found during the study.

Overall, 94.3% of patients stated they were satisfied with the anesthetic they received and 94.7% would recommend the anesthetic technique to a loved one. In addition, experience with office-based anesthesia tended to reduce the patient's anxiety about future OMS procedures.

The authors of the study attribute the low rate of complications and high rate of patient satisfaction associated with the administration of office-based anesthesia to the intensive anesthesia training received by oral and maxillofacial surgeons and to the high standards of care maintained by the specialty.

More information on this study can be found online at www.aaoms.org.

In this letter:

Study reveals safety of OMS office anesthesia	1
NVMS joins Blue Shield Network	1
Dental Implants: Are they right for your patients?	2
Have lunch with us!	2

NVMS joins Blue Shield Dental Network

North Valley Maxillofacial Surgery is now an in-network provider for the following Blue Shield Dental group plans:

1244 (DHMO-Ins-CA), **1245** (DHMO ASO Control CA), **1249** (DMO Partial Risk), **1251** (United Airlines), **1254** (PPO Ins Control CA), **1259** (PPO-ASO-CA), **1260** (DMO FEHB), **1267** (IFP DHMO), **1268** (IFP PPO). We are also in-network providers with the following insurances:

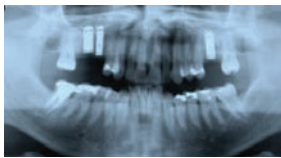
- Delta Dental of CA
- Dental Benefit Providers
- United HealthCare
- Guardian California
- Pacific Health Alliance
- Butte Sierra Dental
- Medicare

We accept Medi-cal and Denti-cal patients on a limited basis. Please call for more information.

Dental Implants: When are they right for your patients?



Fractured, non-restorable teeth 3, 4 and 14 were extracted in August.



Implants were placed 7 months post-extraction with a bone graft and sinus 'up fracture'.



?? months later, the patient was ??.

Who is a good candidate for dental implants?

Dental implants are ideal for patients who have lost a tooth or teeth, and who are in good general and oral health, as adequate bone in the jaw is needed to support the implant. (Although bone can be ...)

Dental implants are actually more tooth-saving than traditional bridgework, since implants do not rely on neighboring teeth for support. Dental implants are also natural-looking and feeling, and under proper conditions, including diligent patient maintenance, implants can last a lifetime.

What dental implants can do:

- Replace one or more teeth without affecting bordering teeth.
- Support a bridge and eliminate the need for a removable partial denture.
- Provide support for a denture, making it more secure and comfortable.

Types of implants in use today

Endosteal (in the bone): This is the most commonly used type of implant. The various types include screws, cylinders or blades surgically placed into the jawbone. Each implant holds one or more prosthetic teeth. This type of implant is generally used as an alternative for patients with bridges or removable dentures.

Subperiosteal (on the bone): These are placed on top of the jaw with the metal framework's posts protruding through the gum to hold the prosthesis. These types of implants are used for patients who are unable to wear conventional dentures and who have minimal bone height.

Advantages of implants over dentures or a bridge

- **Esthetic:** Dental implants look and feel like natural teeth. Since dental implants integrate into the structure of surrounding bone, they prevent the bone loss and gum recession that often accompany bridgework and dentures.
- **Tooth-saving:** Dental implants don't sacrifice the quality of adjacent teeth like a bridge does because neighboring teeth are not altered to support the implant. More of the patient's own teeth are left untouched, a significant long-term benefit to their oral health.
- **Confidence:** Dental implants allow patients to once again speak and eat with comfort and confidence! They are secure, and offer freedom from the irksome clicks and wobbles of dentures.
- **Reliability** The success rate of dental implants is highly predictable. They are considered an excellent option for tooth replacement.



Surgical care for the face, jaws & mouth

North Valley Maxillofacial Surgery
80 Declaration Drive, Suite 101
Chico, CA 95973
Tel: 530 893-3912
Fax: 530 893-2451

2990 Oro Dam Blvd, Suite C
Oroville, CA 95966
Tel: 530 533-7900
Fax: 530 533-3457

Have lunch with us!

You're receiving this newsletter because your business and professional friendship is important to us, and we'd love to treat you to lunch (at our Chico or Oroville office) and discuss some of the topics we've mentioned here, and to hear

what you have to say to us! Dr. Landis is a registered CE provider, so you'll get an hour of CE credit, too. If you're interested, please call us at 893-3912, or send us a fax (893-2451) that just says **"YES to lunch!"** and we'll call to schedule a date.